



c. 1940s from BPL archives (view looking approx. S)
One bin, wood structure
Conveyor platform, wood coars; 1 yr. old
B2-5978
04-5



Office supply & machine shop, 37 x 61 ft of bldg is machine shop & truss, 37 x 36 ft of bldg is supply room & office has steel frame, bldg. has corr. GI sides & roof. Metal sash windows, unfinished interior, conc. floor, 1 yr. old. Steam heat.
c. 1940s from BPL archives (view looking approx. SE)
33-34101-864136



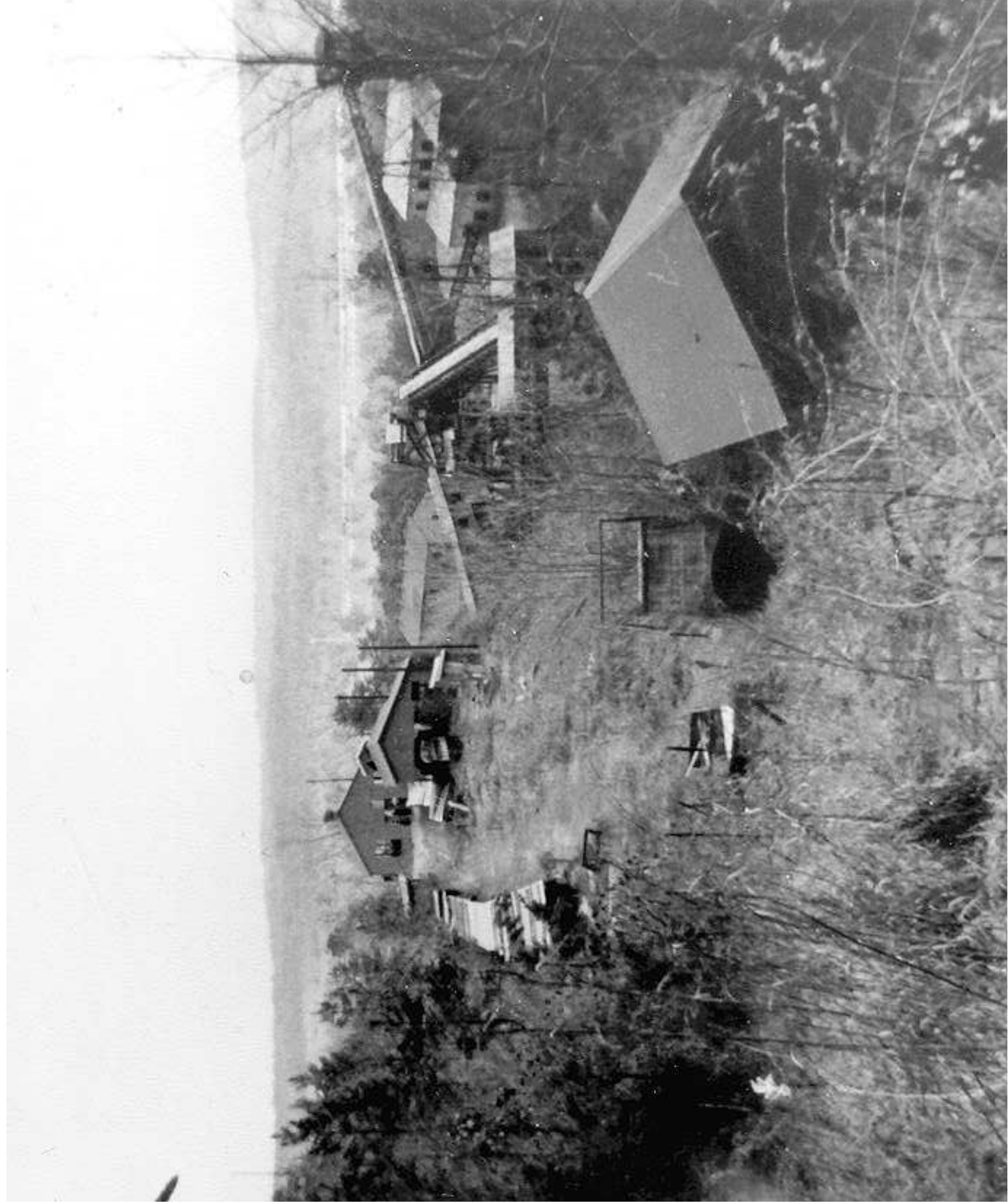
Tally & scale shed, wood frame, corr. iron sides & roof, pine plank roof, 1 room 11 x 14 has slanted floor, corr. iron sides, corr. iron roof. Lumber, leading to D2 (conveyor housing pit) - 16 x 30 x 10, 1 yr. old
c. 1940s from BPL archives (view looking approx. NW)
33-34101-864141
B2-5978
C1



c. 1940s from BPL archives (view looking approx. W)
Wood truss average 6 ft high with motor room on end of truss of wood frame, corr. iron sides & roof, 1 yr. old
33-34102-864137



concrete piers



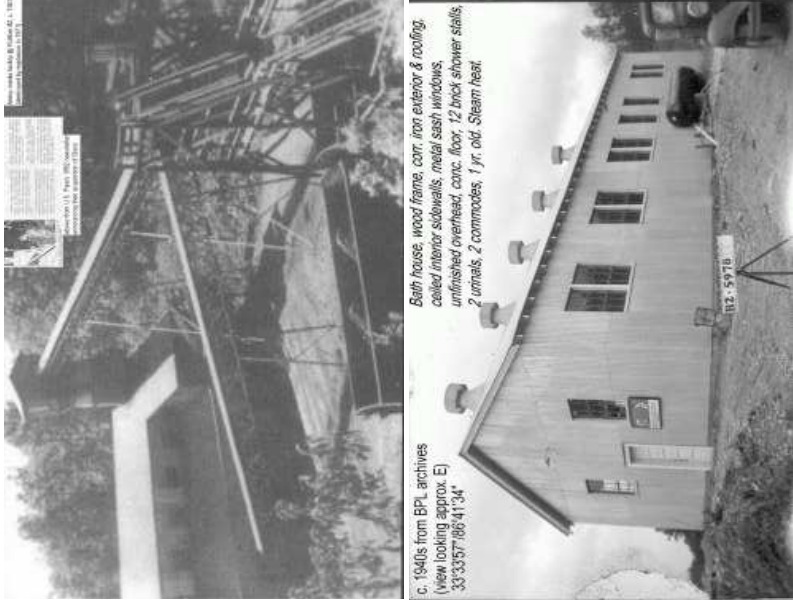
c. 1940s from BPL archives (view looking approx. W)
33-34100-864140
Conveyor housing, wood frame, corr. iron sides & roof, pine floor, average 10 ft. above ground on wood piers
B2-5978
002



c. 1940s from BPL archives (view looking approx. W)
33-34100-864139
Motor house, steel frame, corr. iron sides & roof, unfinished interior, steel plate floor, on conc. piers 8 ft high.
B2-5978
003



c. 1940s from BPL archives (view looking approx. S)
33-34100-864140
Crusher on conc. foundation 16 x 16 x 16, frame of 12" timbers 16 x 16 at base & 30 ft high.
B2-5978
001



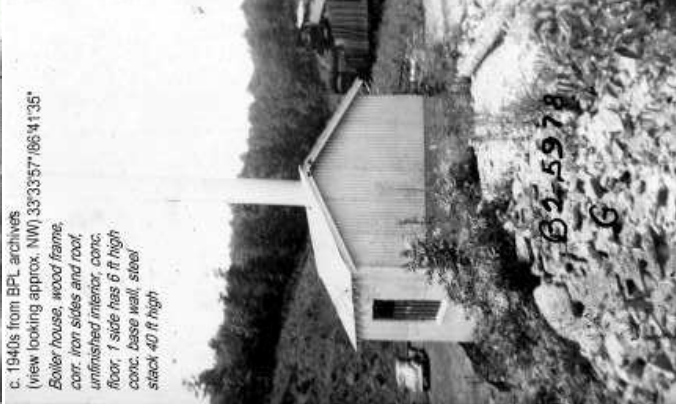
c. 1940s from BPL archives (view looking approx. E)
33-3357-864134

Bath house, wood frame, corr. iron exterior & roofing, coiled interior subwalls, metal sash windows, unfinished overhead, conc. floor, 12 lock shower stalls, 2 urinals, 2 commodes, 1 yr. old. Steam heat.



c. 1940s from BPL archives (view looking approx. NW)
33-3357-864135

Boiler house, wood frame, corr. iron sides and roof, unfinished interior, conc. floor, 1 side has 6 ft high conc. base wall, steel stack 40 ft high



c. 1940s from BPL archives (view looking approx. NW)
33-3357-864135

Boiler house, wood frame, corr. iron sides and roof, unfinished interior, conc. floor, 1 side has 6 ft high conc. base wall, steel stack 40 ft high

big center pic:
ca. 1967,
photo courtesy
G. Warren Reed

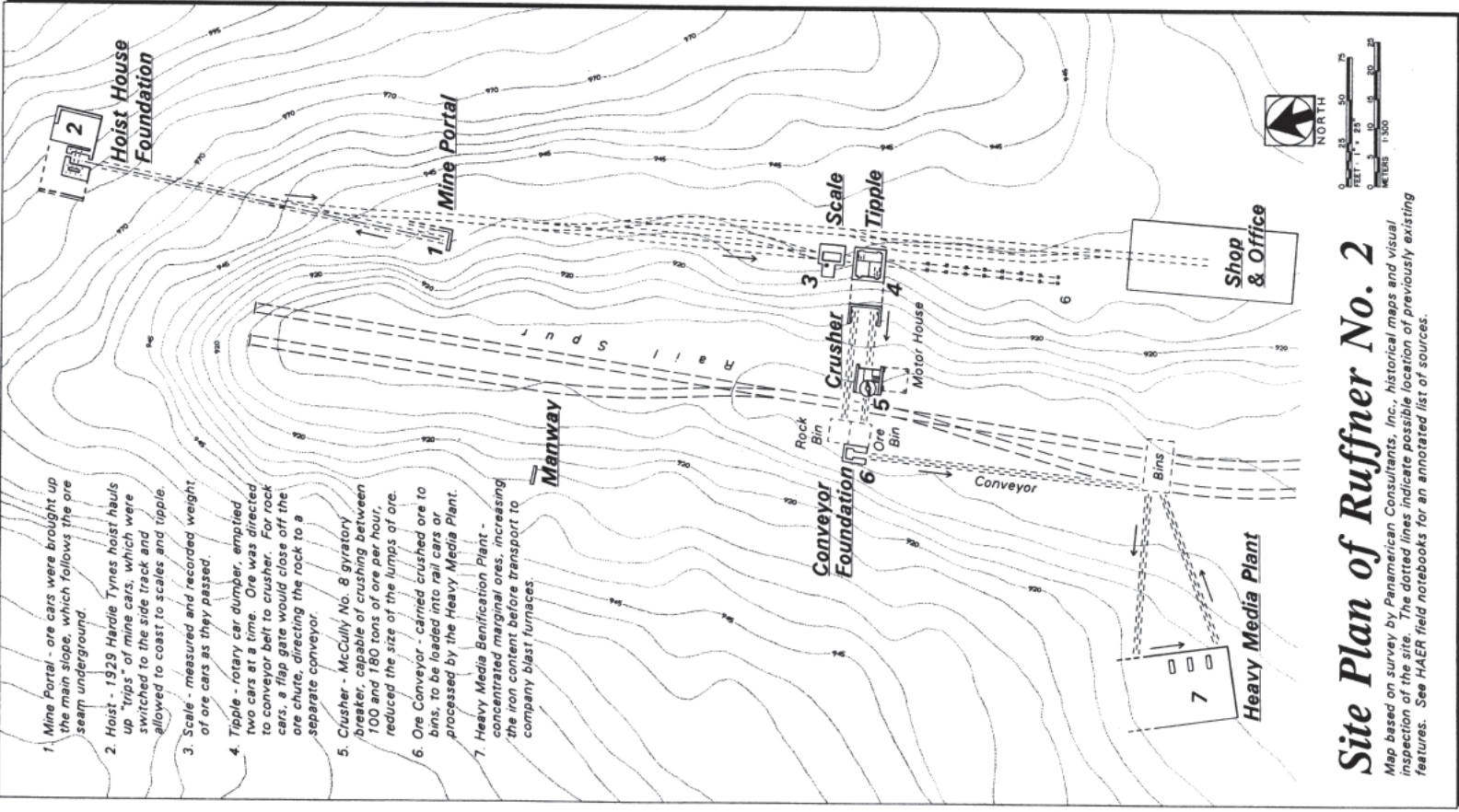
upper R. conc. plant:
Hop Hayes 1971
polaroid 1 day
after explosion

scanned pic of hvy
media facility:
from RMNC collection

balance:
tax assessor's pics
courtesy BPL

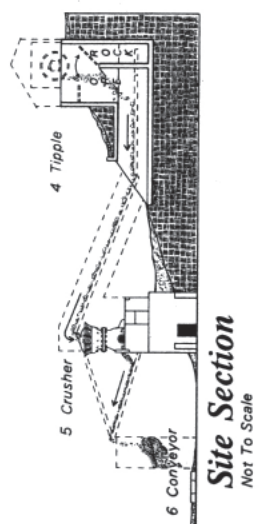
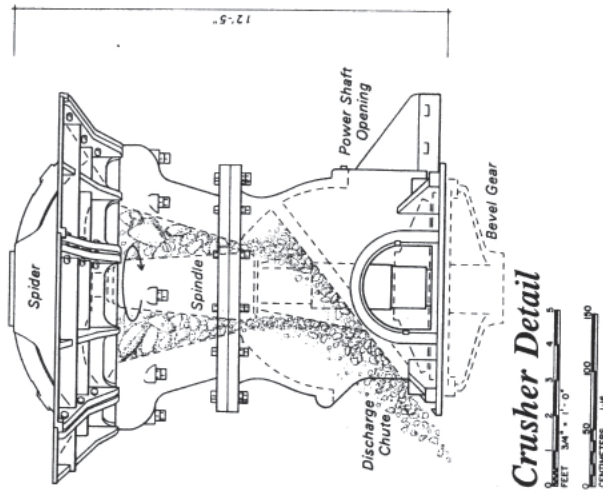
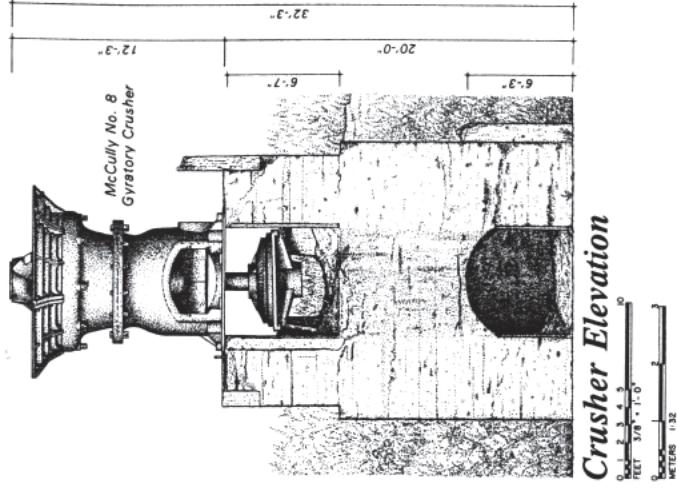
RUFFNER No. 2 MINING OPERATIONS

Jefferson County, Alabama c. 1950



Site Plan of Ruffner No. 2

Map based on survey by Panamerican Consultants, Inc., historical maps and visual inspection of the site. The dotted lines indicate possible location of previously existing features. See HAER field notebooks for an annotated list of sources.



AI Chapter SIA
 March 6, 2010
 Ruffner Mountain Nature Center
 Ruffner #2 Mining Complex
 Marty Schulman (with much help)

